

FORMED WIRE FALSE DEADENDS

DEADEND WITHOUT CUTTING THE STRAND

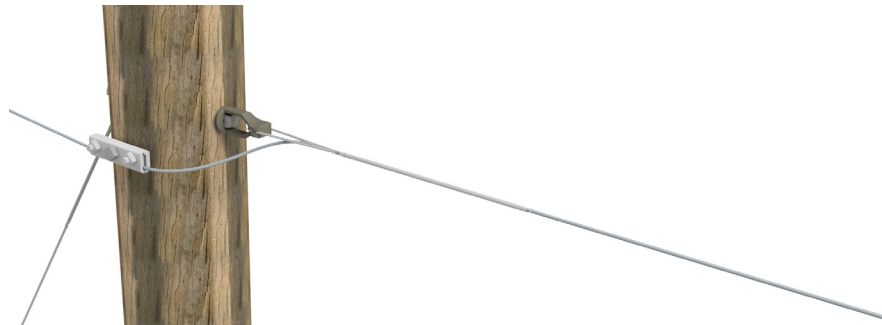
False Deadends provide the fastest and most economical method for false deadending strand. They are easily applied by hand without tools and without the need to cut the strand. They are made of the same material as the strand to which they are applied and are designed to hold the full-rated strength of the strand. For use with left-hand lay strand.

MATERIAL

- Galvanized steel wire (B-coat) - FWFDE
- Zinc-Aluminum coated steel wire - BFDE

BENEFITS

- FWFDE formed wire false deadends are designed for use on all types of galvanized guy strand (EHS, High Strength, Common, Siemens-Martin, Utilities and Bell System Strand).
- BFDE formed wire false deadends are designed for use on Bezinal® or other common Zn-Al coated steel strand.
- False deadends will hold a minimum of 100% of the guy wire rated breaking strength (RBS).



CATALOG NUMBER		PRODUCT DATA					COMPETITOR CROSS REFERENCE			
GALV. STEEL (B-COAT)	BEZINAL®	NOMINAL SIZE	MAX RBS LB (KN)	MIN DIA IN (MM)	MAX DIA IN (MM)	COLOR CODE	PLP		MPS	
							GALV. STEEL	BEZINAL®	GALV. STEEL	GALFAN®
FWFDE1104	BFDE9104	1/4"	6,650 (29.6)	0.231 (5.87)	0.259 (6.58)	YELLOW	GFDE-2121	BFDE-9121	FDE-S1121	FDE-S9121
FWFDE1106	BFDE9106	5/16"	11,200 (49.8)	0.292 (7.42)	0.336 (8.53)	BLACK	GFDE-2123	BFDE-9123	FDE-S1123	FDE-S9123
FWFDE1107	BFDE9107	3/8"	15,400 (68.5)	0.337 (8.56)	0.394 (10.01)	ORANGE	GFDE-2124	BFDE-9124	FDE-S1124	FDE-S9124
FWFDE1108	BFDE9108	7/16"	20,800 (92.5)	0.395 (10.03)	0.474 (12.04)	GREEN	GFDE-2125	BFDE-9125	-	-

